



# MOVE-IN READY OFFICE SPACE FOR LEASE

4305 Windsor Centre Trail, Suite 400  
Flower Mound, TX

## LOCATION:

Located in central Flower Mound at Windsor Professional Centre, an office development with medical and professional office tenants. Positioned off Long Prairie Road and Windsor Drive. Across the street from Texas Health Presbyterian Hospital and The River Walk at Central Park with easy access to many nearby restaurant and retail offerings.

## SIZE:

- Suite 400 – 1,704 RSF

## LEASE RATE:

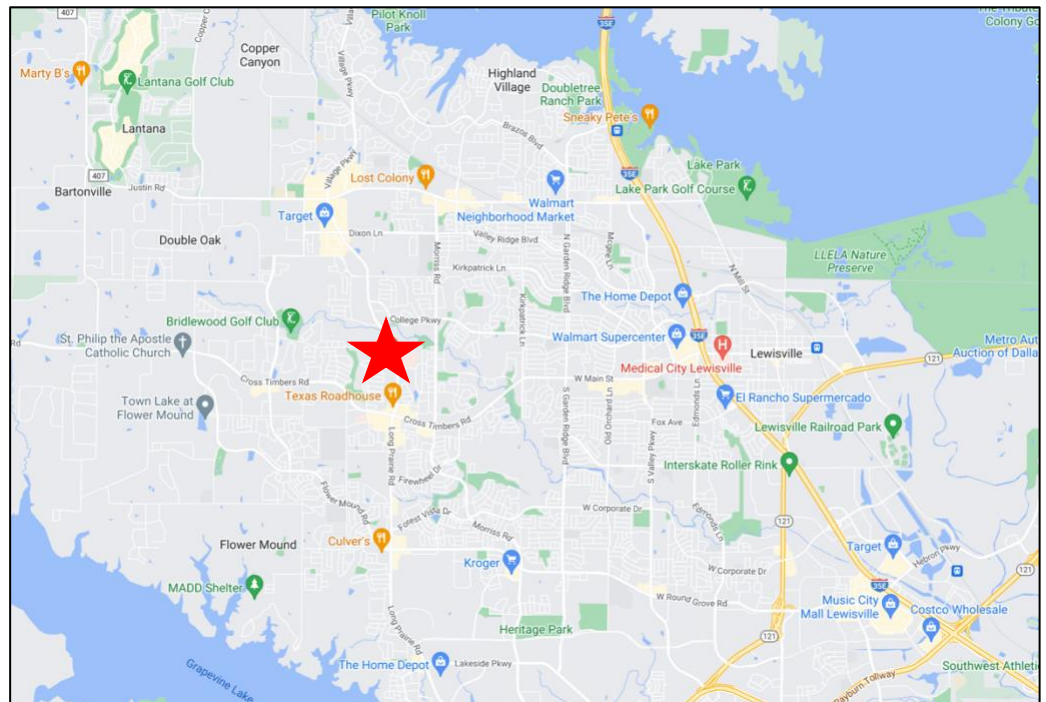
- \$18.00/SF/YR Base Rent + NNNs

## HIGHLIGHTS:

- Private Entrance.
- Features upscale finish-out to include custom granite countertops in restrooms, 10' ceiling heights and wood trim.
- Six individual offices, reception area, conference room, two restrooms, and breakroom.

## AVAILABILITY:

- Immediate



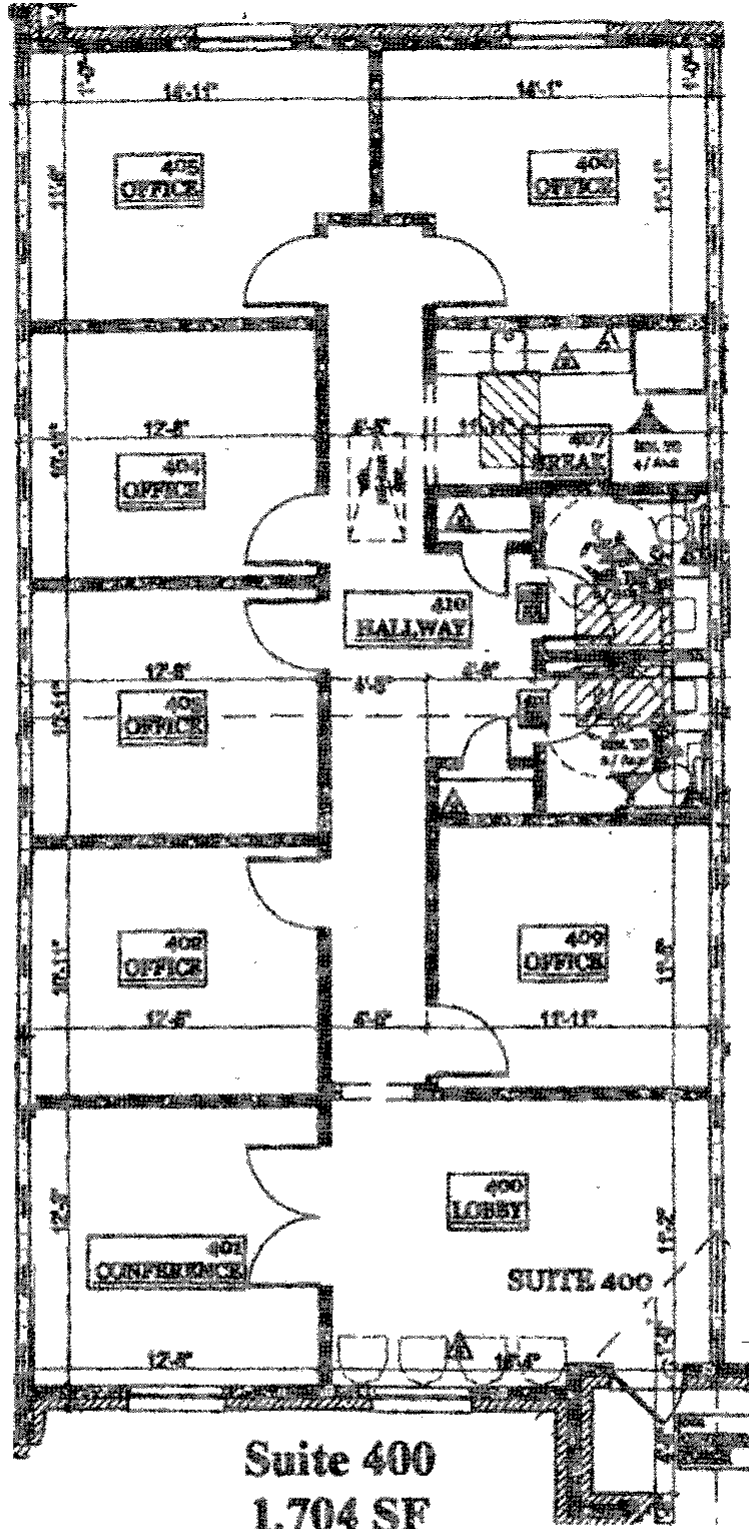
## FOR INFORMATION:

Phyllis Garcia | Diana Pergande  
972.899.1851 | Phyllis@BridgeRealtyTexas.com | Diana@BridgeRealtyTexas.com  
[www.BridgeRealtyTexas.com](http://www.BridgeRealtyTexas.com)  
400 Parker Square, Suite 270H | Flower Mound, TX 75028

This information is believed to be accurate, but no representation or warranty, express or implied, as to its accuracy or completeness is made by any party. The presentation of this property is submitted subject to errors, omissions, change of price or prior sale or lease, or withdrawal without notice.

# FLOOR PLAN

4305 Windsor Centre Trail, Suite 400  
Flower Mound, TX





# PHOTOS

4305 Windsor Centre Trail, Suite 400  
Flower Mound, TX

